

HWg-STE

Web thermometer with Ethernet and software for creating MS Excel reports



E-mail alerts

HWg-STE monitors temperature and humidity using external probes, supports SNMP, and connects to the Internet through an Ethernet network. Get immediately notified via e-mail whenever the monitored values exceed the allowed range.



Temperature

HWg-STE supports up to three sensors connected over the 1-Wire bus. A built-in web server is used for configuring. The device can be monitored remotely over the internet. It is supplied with the free HWg-PDMS software for creating graphs and exporting data to MS Excel.



Humidity



Web server

Food storage
Oversee optimal storage conditions. With application software, HACCP reports can be created.

Service provision monitoring
With the supplied HWg-PDMS software, easily create reports with temperature charts for one or more locations. Monitor the quality of outsourced services.

HVAC monitoring
Monitor HVAC systems remotely, get alerted by e-mail or text messages.



Password protection

Supplied with an AC adapter and a temperature sensor.



SNMP

Heating optimization
Save on heating and air-conditioning costs.

Detecting A/C problems
Temperature changes may point to a malfunctioning air-conditioning unit.

Easily create temperature graphs in MS Excel.



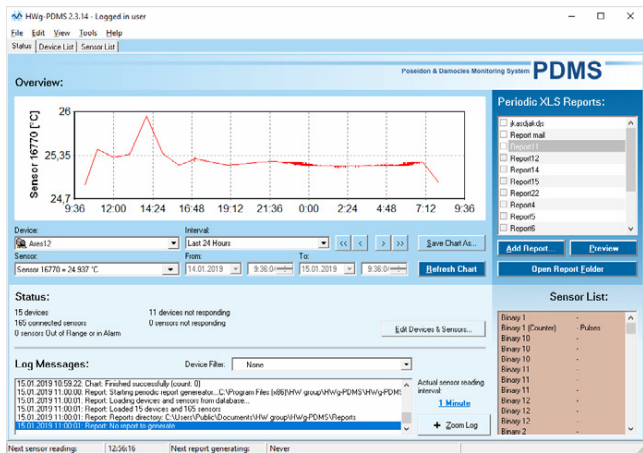
Easy installation

Easy installation, DHCP support.

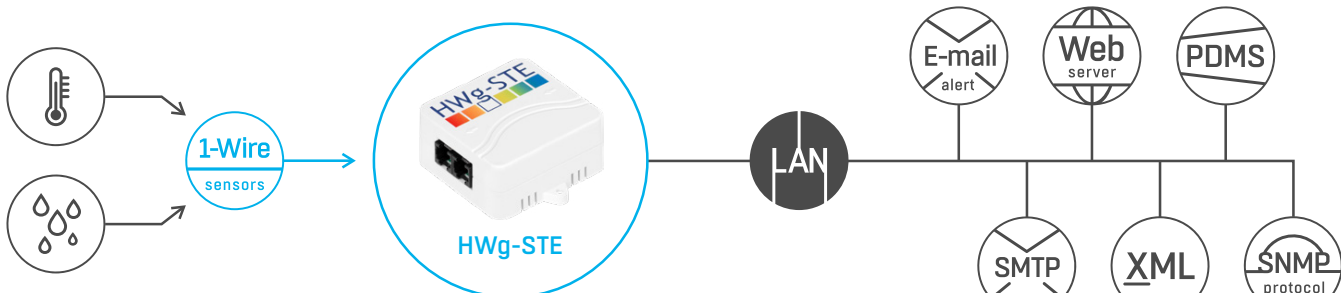
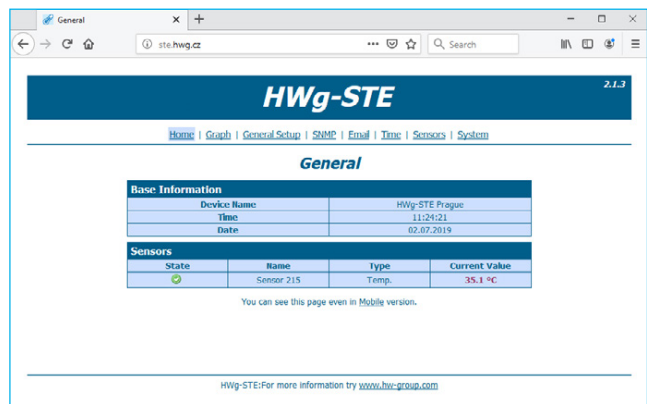
Basic features

- No SW necessary, built-in web server
- Easy installation, DHCP support
- Connects to NMS (SNMP MIB)
- Resolution: 0.1 °C, supports °C / °K or °F
- Sends e-mail if the temperature is too high / too low
- Security ensured with a password
- Temperature range of the standard sensor: -10 °C to 80 °C, outdoor version: -30 °C to 125 °C
- In addition to the supplied sensor, a second temperature or humidity sensor can be connected
- Supplied with the HWg-PDMS software for Windows for plotting charts and exporting data to MS Excel

Parameters	
Ethernet	100 Mbit/s
IP protocols	ARP, TCP/IP (HTTP, SMTP), UDP/IP (SNMP)
DHCP for IP assignment:	Yes
SNMP	Port 161, Ver 1.0 / 2.0 (partial)
M2M protocols	XML (http), SNMP
Accuracy	±0,5°C (-10°C to +85°C) ±2°C (-55°C to +125°C)
Power	5V / 1W
Operating temperature	-10°C to 60°C



Configuration interface



Related products



Temp-1Wire-Flat 3m

Temperature sensor for indoor and outdoor use in pharma and food industries – special flat cable version for measuring temperature in refrigerators and freezers.



Temp-1Wire Rack 19

Digital temperature and humidity sensor, designed for 19" cabinets, connects to the 1-Wire bus (RJ-12).



UPS 12V and 5V

Cost-effective uninterruptible power supply for small devices powered from 12V or 5V adapters.



HWg-PDMS

Monitoring software with charts and MS Excel output. Windows application for data collection over GSM and LAN.